

KEY CONTROL

Combination Lock

Item #
PR-CL

Description
Combination Lock used in DKC cabinets



Combination Lock

DKC - 20

- 20—Capacity Key Cabinet
Outside H 8", W 6.3", *D 3.2"
Weight 3 Lbs
*(Add 0.5" for the lock)



Key Lock

KC—20

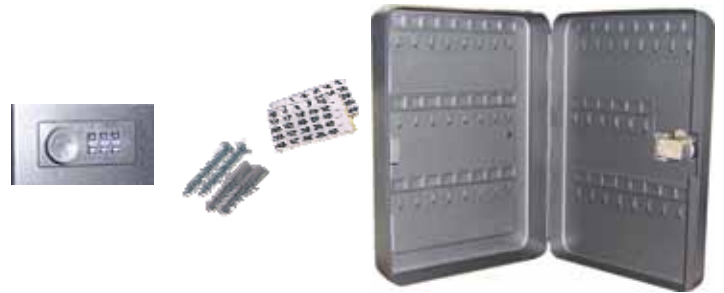
- 20—Capacity Key Cabinet
Outside H 8", W 6.4", D 3.2"
Weight 2 Lbs.



Combination Lock

DKC - 46

- 46—Capacity key Cabinet
Outside H 11.8", W 9.5", *D 3.2"
Weight 5 Lbs
*(Add 0.5" for the lock)



Key Lock

KC—48

- 48—Capacity Key Cabinet
Outside H 12", W 9.6", D 3.2"
Weight 4 Lbs.



Combination Lock

DKC - 94

- 94—Capacity Key Cabinet
Outside H 11.8", W 9.5", *D 3.2" *(Add 0.5" for the lock)
Weight 7 Lbs



Key Lock

KC—96

- 96—Capacity Key Cabinet
Outside H 12", W 9.6", D 3.2"
Weight 5.5 Lbs.



KEY CONTROL

- Scratch & corrosion resistant epoxy powder coat paint
- Heavy gauge steel construction
- Anchoring holes & screws for easy installation
- Key control tags
- Numbered key control booklet for lock location data



Accessories

Digital Lock SFK-48EN(S)

- 48 Key capacity
- Electronic lock to program with 3-8 numbers
- Manual override key
- Powder coated in & out
- Pre-drilled holes with mounting bolts
- With key drop slot

Outside H 14.3", W 11.8", D 3.9"
 Weight 18 Lbs.
 Slot H 2", W 1.25"



Digital Lock SFK-144EN(S)

- 144 Key capacity
- Adjustable key racks
- Powder coated paint
- Heavy gauge steel construction
- Electronic lock with override key
- Opening for key deposit

Outside H 26", W 17", D 5.13"
 Weight 47.4 Lbs.



Key Lock KC-145-8

- 8—Capacity Key Cabinet

Outside H 6.6", W 5.75", D 2"
 Weight 1.5 Lbs.



Key Lock KC-330-60

- 60—Capacity Key Cabinet

Outside H 17", W 13", D 3.3"
 Weight 6 Lbs.



Key Lock KC-205-30

- 30—Capacity Key Cabinet

Outside H 12", W 8", D 2.5"
 Weight 2.7 Lbs.



Key Lock KC-330-120

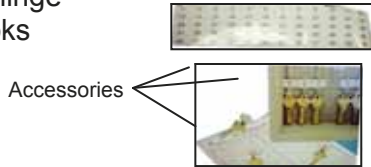
- 120—Capacity Key Cabinet

Outside H 17", W 13", D 3.3"
 Weight 6.6 Lbs.



KEY CONTROL

- Heavy gauge steel construction
- Numbered key tags with key rings
- Lock location chart for easy reference
- 4-point mounting hardware and predrilled holes
- Continuous piano hinge
- Steel key—tag hooks



Key Lock K 300

- 30—Key Capacity C/W Key Lock
- Outside H 12", W 8.1", D 3.2"
Weight 5.5 Lbs.



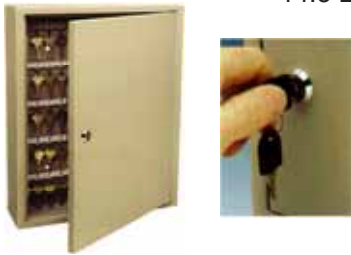
Key Lock K 600

- 60—Key Capacity C/W Key Lock
- Outside H 19.5", W 13.6", D 4.8"
Weight 14.3 Lbs.



Key Lock K 1200

- 120—Key Capacity C/W Key Lock
- Outside H 19.5", W 13.6", D 4.8"
Weight 14.3 Lbs.



EXTRA KEY TAGS FOR GE CABINETS

- | Item # | Description |
|--------|------------------------------|
| 001819 | Bag of 140 Assorted Key Tags |



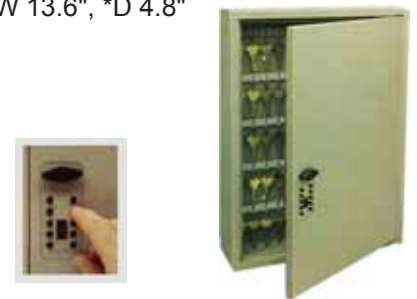
Pushbutton Lock QA 300

- 30—Key Capacity C/W QuickAccess Lock
- Outside H 12", W 8.1", *D 3.2"
Weight 5.5 Lbs.
*(Add 0.5" for the lock)



Pushbutton Lock QA 600

- 60—Key Capacity C/W QuickAccess Lock
- Outside H 19.5", W 13.6", *D 4.8"
Weight 14.5 Lbs.
*(Add 0.5" for the lock)



Pushbutton Lock QA 1200

- 120—Key Capacity C/W QuickAccess Lock
- Outside H 19.5", W 13.6", *D 4.8"
Weight 14.5 Lbs.
*(Add 0.5" for the lock)



TouchPoint Lock (Clay) 001798

- Description
Outside: H 3.5", W 1.75", D 1"
Weight 1 Lbs

