



TELEPORT

TELEPORT is a next generation IP door entry system that provides the ultimate in convenience with two way audio and video in the palm of your hand. Industry leading SIP/VOIP for two way audio and video streaming to mobile phones utilizing h.264 real time video compression with clarity at modest bandwidth. TELEPORT supports Android, iOS and soft phone clients. TELEPORT supports up to eight clients to accommodate the variety of devices in your household whether tablets or mobile phones.

Don't open your *door* to the unknown



MOBILE PLATFORMS iOS & ANDROID



Push Notifications & Background Mode

Two-Way Audio and Video

Monitor your Door at any time

Supports Multiple Locations

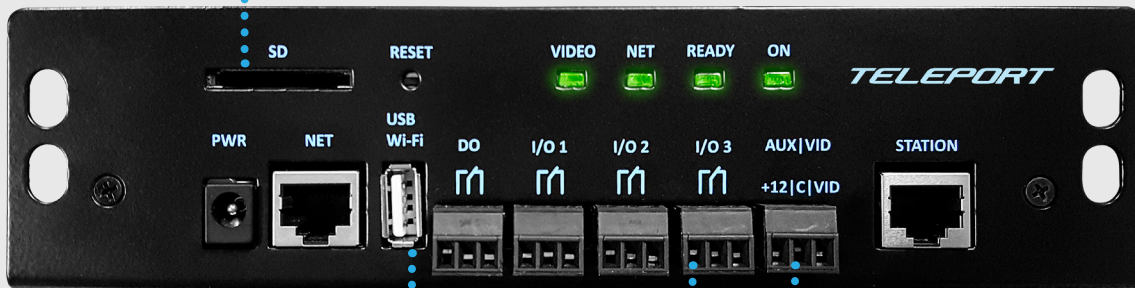
Relay Control to Open your door or trigger devices

Download for Android & IOS Search
TELEPORT BY LOGENEX
or use QR codes below



TELEPORT TPC

SD Card Slot for Local Recording of Button Press or Motion Events



USB for Local Recording of Button Press or Motion Events or Wi-Fi dongle for network connectivity alternative

Analog video output for DVR Recording & Auxiliary 12vDC Output

Form C Relays can be used as inputs or outputs to intergrate with 3rd party device



S SERIES

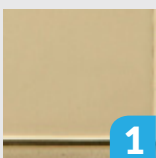
Modern Design
 Stainless Steel Construction
 Vandal Resistant
 Surface Mount or Flush Mount
 Cool Blue Illuminated Button
 8 Colour Choices
 Rough In Backbox required for
 flush mount version

X SERIES

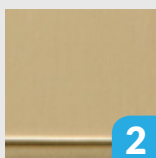
Economical
 Rugged Construction
 Contemporary Colour
 Surface Mount Only
 Fixed Panning Camera
 Cool Blue Illuminated Button

ELITE SERIES

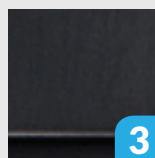
Classic Design
 Solid Brass Construction
 Vandal Resistant
 Flush Mount Only
 Illuminated Button
 8 Colour Choices
 Rough In Backbox Required



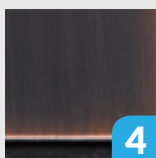
1



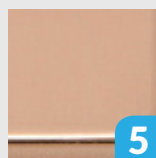
2



3



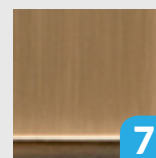
4



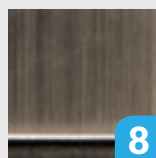
5



6



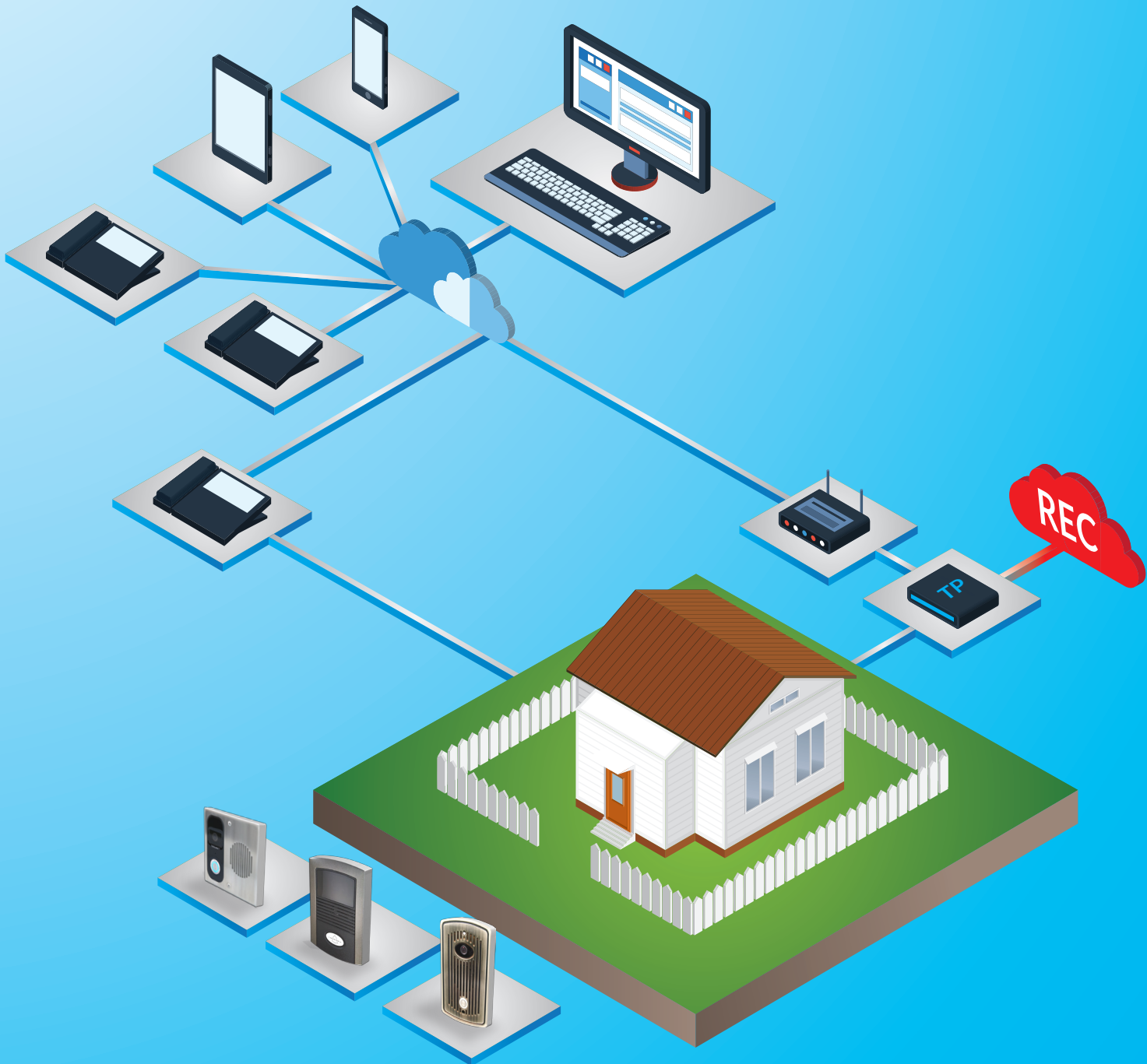
7



8

**1. POLISHED BRASS 2. SATIN BRASS 3. OIL RUB 4. OIL RUB BRONZE
 5. COPPER 6. ANTIQUE BRASS 7. BRONZE 8. ANTIQUE NICKLE**

TELEPORT RESIDENTIAL INSTALLATION TOPOLOGY



TELEPORT COMMERCIAL INSTALLATION TOPOLOGY



AVAILABLE COLORS - S SERIES FLUSH ^{*BACKBOXES REQUIRED*}



AVAILABLE COLORS - S SERIES SURFACE



1. POLISHED BRASS
2. SATIN BRASS
3. OIL RUB
4. OIL RUB BRONZE
5. COPPER
6. ANTIQUE BRASS
7. BRONZE
8. ANTIQUE NICKLE

AVAILABLE COLORS - ELITE SERIES *BACKBOXES REQUIRED*



1



2



3



4



5



6



7



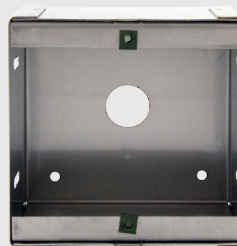
8

Elite Backbox



BXR-300EVC

Stainless Flush Mount Backbox



BXR-300

- 1. POLISHED BRASS 2. SATIN BRASS 3. OIL RUB 4. OIL RUB BRONZE**
5. COPPER 6. ANTIQUE BRASS 7. BRONZE 8. ANTIQUE NICKLE

TELEPORT SPECIFICATIONS

Channels	1
Video Compression	H.264 BP @ Level 3.0, JPEG, Motion Jpeg
Max Video Resolution	720 x 480
Max Frame Rate in Max Video Resolution	30 fps
Video Bit Rate	32 Kps - 2Mbps
Audio Compression	G711, G726
Dry Contact Relays 2 Form C: I/O 1 & I/O 2: 12-48 vDC or vAC 2A	I/O 1 & I/O 2 (Timing Programmable)
Alarm Output Form C: I/O 1 & I/O 2: 12-48 vDC or vAC 2A	D/O (Timing Programmable)
Embedded Analytics	Motion Detection (16 Target Areas)
Pre/Post Alarm Buffer	24 MB
Snapshots	Triggered upon events, send via email/cloud
Multi-streaming rate for Preview & Recoding	Yes
Peripheral Ports	SD 2.0 (64 GB Max), USB Host 2.0 (2TB)
Wi-Fi (802.11 b/g)	External USB Dongle Available
SIP/VOIP Support	Yes
Dimensions (LxWxH)	159mm x 108mm x 32mm
Weight	0.8 Kg
Controller Temperature Rating	-10 degrees celcius - + 55 degrees celcius
Door Station Temperature Rating	- 40 degrees celcius - + 55 degrees celcius
Power	Output: 12vDC/1.0A Input: 100-240vAC 50-60Hz
Compliance	TBA